

FLEXIBLE SOLID FLOORING SYSTEM HUMANITARIAN SECTOR

A UNIQUE FLOORING
CONCEPT FOR
AREAS WITH HIGH
DEMANDS.



CAN BE APPLIED TO DIFFICULT
AND INSUFFICIENT AREAS
SUCH AS SAND, SOIL, GRASS
AND ICE.



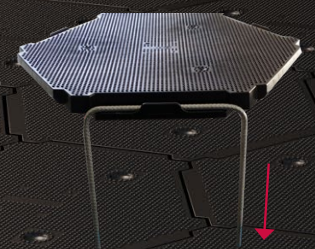


CBR (CALIFORNIA BEARING RATIO)

The FLEXIBLE SOLID flooring System can be placed even on grounds with very low CBR values, e.g. clay etc.

The soft ground material will fill up the underneath rip design of the elements to further increase element stability. Important is that the ground is not sinking such as moor, swamp land, etc.

The floor tiles create a "bridging-effect" over the laid-out ground. If there is a hole underneath the element may bridge it completely or bend into the whole depending on the size of hole and load. After the vehicle has passed over the element it will bounce back. The driveway should be closed also in width to have the best possible shear force performance especially if the driveway is going up and down in longitudinal direction and eventually also has a transversal angle.



Both floor types can be fixed to a soft substructure with ground anchors.



FLEXIBLE SOLID flooring system is a strong, flexible and easy mounted ground protecting interlocking floor with high sustainability.

FLEXIBLE SOLID comes in two different models: Basic and Superior. The hexagonal design provides exceptionally strong locking in six directions.

FLEXIBLE SOLID is made from strong plastic (HDPE), developed for the UN for emergency and conflict areas. Its flexibility and strength makes these ground protecting floor tiles perfect for store units, pavilions and even to build temporary roads where heavy vehicle can operate. Even when it comes to events, camping and as a protecting surface, **FLEXIBLE SOLID** flooring system is optimal to use.

ADVANTAGES:

- Heavy duty floor.
- Can be applied on all types of outdoor surfaces, even sand, soil, grass and ice.
- Adapts to the subground and no preliminary work is needed.
- Can resist very heavy loads and carries trucks, machines and cars.
- Easy to install and move.
- Time of installation/person: approx. 100 m²/h

USAGE AREAS:

- Warehouses and tents.
- Outdoor events and concert venues.
- Temporary parking lots, e.g. in connection with events.
- Temporary roads that also allows heavy vehicles (e.g. building/construction works).
- As subfloor for sport arenas.
- Protection of existing surfaces.
- Events on ice.





STRONG, FLEXIBLE
AND EASY MOUNTED!



TIME OF INSTALLATION/PERSON
APPROX. 100 m²/h

The infographic displays the 17 Sustainable Development Goals (SDGs) in a grid format. The central focus is Goal 11, 'Sustainable Cities and Communities', which is highlighted with a larger icon and the text 'THE GLOBAL GOALS For Sustainable Development'. Surrounding this are icons for Goals 5 (Gender Equality), 6 (Clean Water and Sanitation), 7 (Affordable and Clean Energy), 12 (Responsible Consumption and Production), and 17 (Partnerships for the Goals). The icons are color-coded: red for Gender Equality, blue for Clean Water and Sanitation, yellow for Affordable and Clean Energy, brown for Responsible Consumption and Production, and dark blue for Partnerships for the Goals.

5 GENDER EQUALITY	6 CLEAN WATER AND SANITATION	7 AFFORDABLE AND CLEAN ENERGY
11 SUSTAINABLE CITIES AND COMMUNITIES	12 RESPONSIBLE CONSUMPTION AND PRODUCTION	17 PARTNERSHIPS FOR THE GOALS

THE GLOBAL GOALS
For Sustainable Development





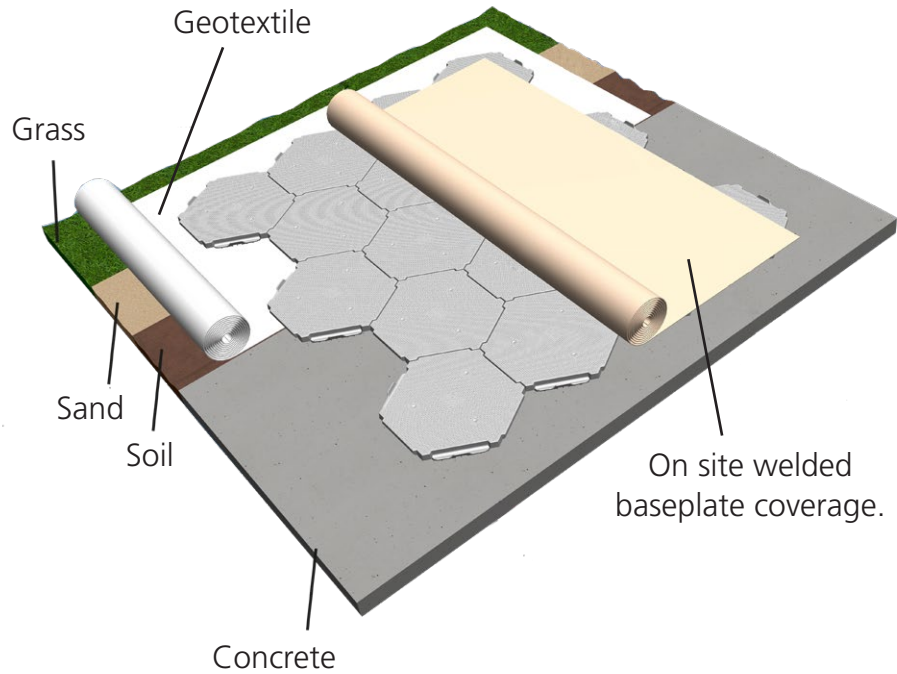
GROUND PROTECTING
INTERLOCKING FLOOR WITH
HIGH SUSTAINABILITY.

EASY TO INSTALL.



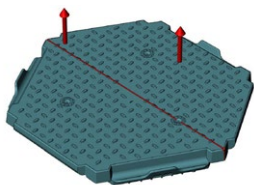
FLEXIBLE SOLID FLOORING SYSTEM ASSEMBLED ON DIFFERENT SURFACES

A geotextile underneath protects the tiles from dirt on soft grounds like grass, sand or soil. A coverage can be placed on top of the floor for hygienic purposes, etc.

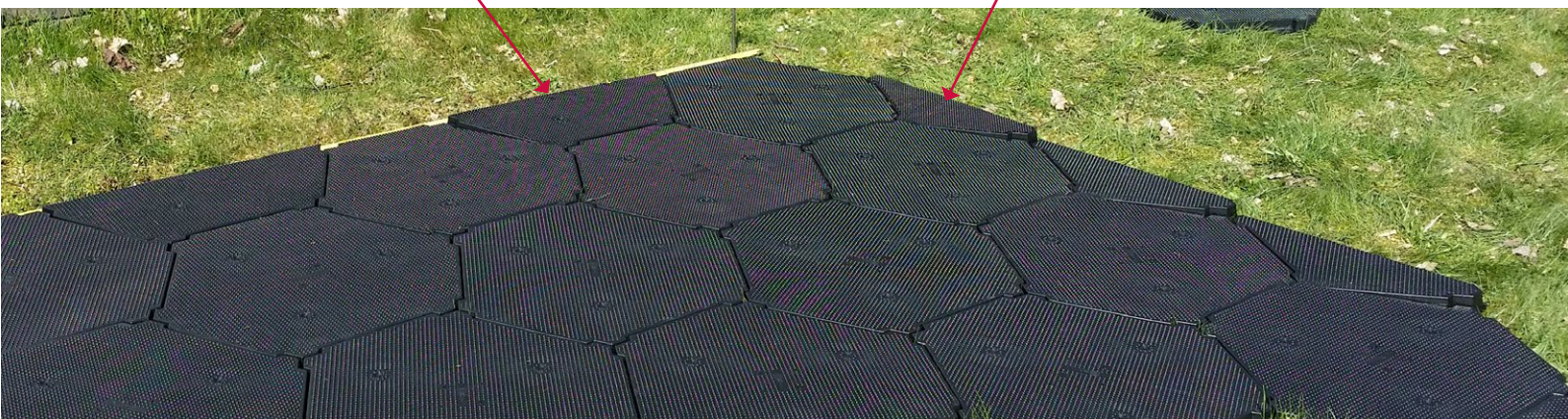
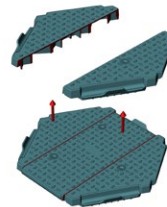


CUT FOR A STRAIGHT FINISH

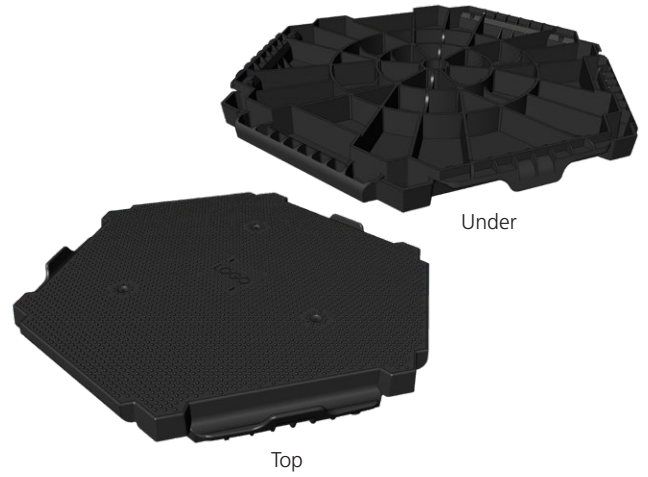
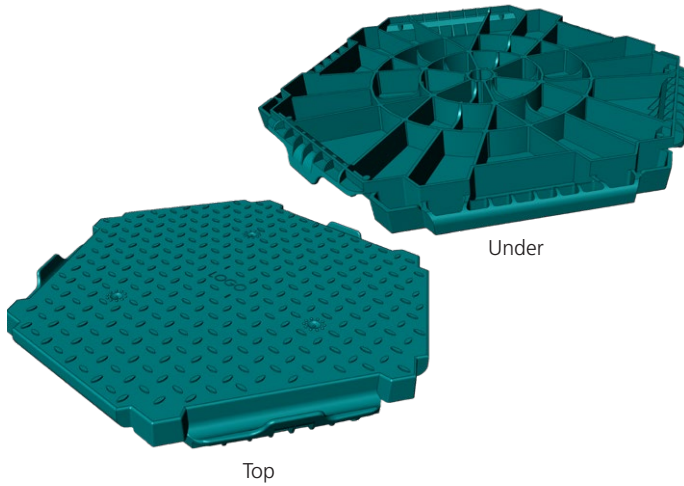
Half tiles for straight edge:



Triangles for straight edge:



TECHNICAL INFORMATION



FLEXIBLE FLOOR **Heavy Duty**

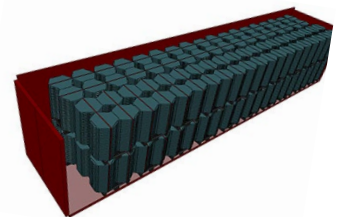
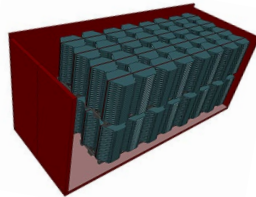
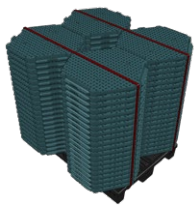
- Material: HDPE
- Made in Sweden
- Point Load: 20000 Kg / m²
- Length: 630 mm
- Width: 575 mm
- Height: 50 mm
- Weight/tile: 3,1kg
- Weight/m²: ca 11,5 kg
- Colour: Green. Request for optional colours.
- Temperature: -30 ° C to + 70
- U-value of units: 0,8 W/m²K
- Warranty: 2 years

FLEXIBLE FLOOR **Light Duty**

- Material: HDPE
- Made in Sweden
- Point Load: 5000 Kg / m²
- Length: 630 mm
- Width: 575 mm
- Height: 50 mm
- Weight/tile: 2.9 kg
- Weight/m²: ca 10,5 kg
- Colour: Black
- Temperature: -30 ° C to + 60
- U-value of units: 0,8 W/m²K
- Warranty: 2 years



MADE IN SWEDEN



LOADING ON A PALLET

FLEXIBLE FLOOR **Light Duty**

- 84 pcs base tiles (22.68 m²)
- 1250 x 1135 x 1200 mm (Length x Width x Height)
- Weight pallet: 243 kg
- Double stack two pallets to a total height of 2400 mm

FLEXIBLE FLOOR **Heavy Duty**

- 84 pcs base tiles (22.68 m²)
- 1250 x 1135 x 1200 mm (Length x Width x Height)
- Weight pallet: 260 kg
- Double stack two pallets to a total height of 2400 mm

LOADING 20FT CONTAINER

FLEXIBLE FLOOR **Light Duty**

- 1280 pcs base tiles (345,6 m²)
- Weight container: 1280 pcs x 2,9 kg = 3712 kg + pallets

FLEXIBLE FLOOR **Heavy Duty**

- 1280 pcs base tiles (345,6 m²)
- Weight container: 1280 pcs x 3,1 kg = 3968 kg + pallets
- 1 Pallet: 115 cm high (20 tiles high) = 80 pcs/pallet = 21,6 m².
- Totally 16 pallets stacked á 21,6 m² = 1280 pcs = 345,6 m².

LOADING 40FT HIGH CUBE CONTAINER

Totally 36 pallets stacked.

FLEXIBLE FLOOR **Light Duty**

- 3024 pcs base tiles (816,48 m²)
- Weight container: 3024 pcs x 2,9 kg = 8770 kg

FLEXIBLE FLOOR **Heavy Duty**

- 3024 pcs base tiles (816,48 m²)
- Weight container: 3024 pcs x 3,1 kg = 9375 kg



www.ip-group.no

IPG Intelligent Packaging Group AS

Hensmoveien 46

3516 Hønefoss, NORWAY

Tel: +47 960 49 556

geir.persen@ip-group.no

