

# CONCEPT MANUAL ECOPACK RETURN PACKAGING



IPG RETURN PACKAGING  
A PROFITABLE RETURN PACKAGING CONCEPT

# IPG RETURN **PACKAGING**

Pack and stack - Optimize

WHEN NATURE ITSELF  
GETS TO DECIDE



# ECOPACK LOGISTIC SYSTEM



If you use the Environmental Pallet and build further with Ecopack, the system gets dimensions of 1200x800 mm in base and height according to your needs. In return are the stackable Environmental Pallet, folded walls and lid. The sleeves stack on top on each other in empty Ecopack. The lids is stacked in empty Ecopack. The various product parts of the Environmental Pallet are separated upon return to give the most effective return low possible. An Environmental Pallet with dimensions 1200x800x800 mm with outgoing goods takes 1200x800x180 mm in return. This means you can send out four lorries and get one back.

Dimension	Outer dimension	Inner dimension
Ecopack 1200x800x800mm	1200x800x800mm	1140x755x640mm
Ecopack 1200x800x1200mm	1200x800x1200mm	1140x755x1040mm

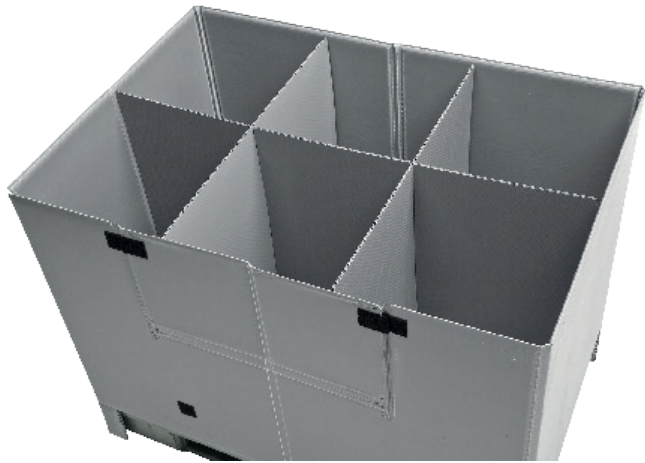
# WHY ECOPACK?



- Rationalises outflows and returns
- Protects the products
- Stackable for transportation and storage
- In-store product exposure
- Possible to partition different products
- Avoid wrapping
- Replaces disposable packaging
- Reduces wasted resources

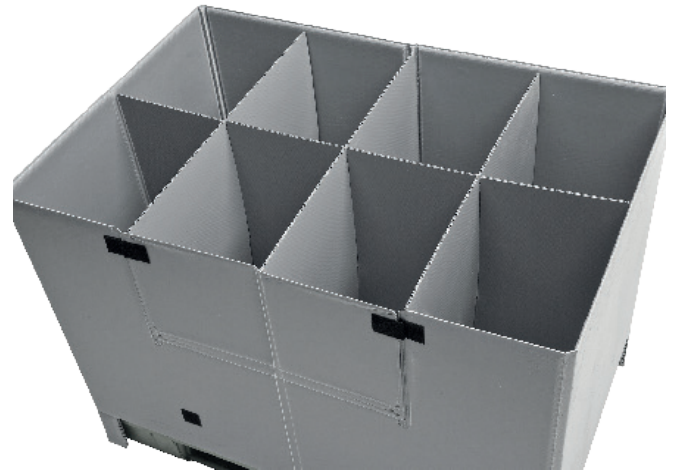
The sleeves of the Ecopack can be customized. The standard colour is grey, but can be delivered in other colours. The walls can be delivered with or without a cargo hatch, logo and RFID.

# ECOPACK DIVIDER SYSTEM



## 6 DIVIDER

We produce customised transport and storage packaging precisely to your requirements. Our long-lasting packaging can be customised limitlessly!



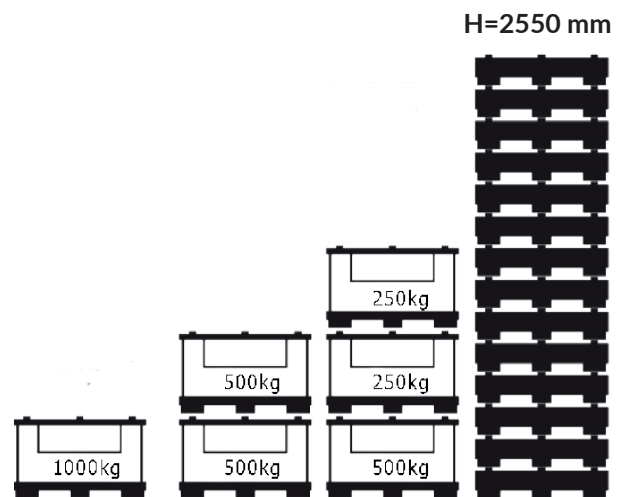
## 8 DIVIDER

All our reusable pallet boxes are very stable and recyclable



## 12 DIVIDER

Customised, with maximum flexibility !



## STACKING AND DOUBLE STACK

You can easily and efficiently transport your products with our foldable smart Ecopack system

# SLEEVES **ECOPACK**

## SINGEL PIECE PALLET **SLEEVE**



### **Z-FOLD**

---

Hinges on the long side allow the sleeve to fully collapse for optimal return and stacking.



### **M-FOLD**

---

Hinges on the short side allow the sleeve to fully collapse for optimal return and stacking.

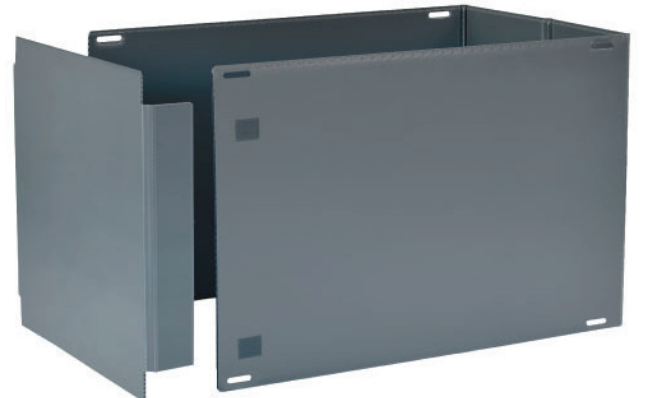
## MULTI PART PALLET **SLEEVES**



### **C-FORMED**

---

Long side, symmetric



### **SHORT SIDE OPEN**

---

Front panel overlaps sleeve

# SLEEVE ALTERNATIVES



## LONG SIDE OPEN

---

Front panel overlaps sleeve



## C-FORMED SLEEVE

---

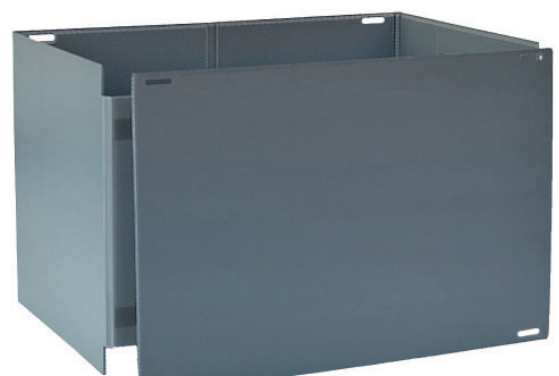
Front wall, symmetric



## SHORT SIDE OPEN

---

C-sleeve interleaved

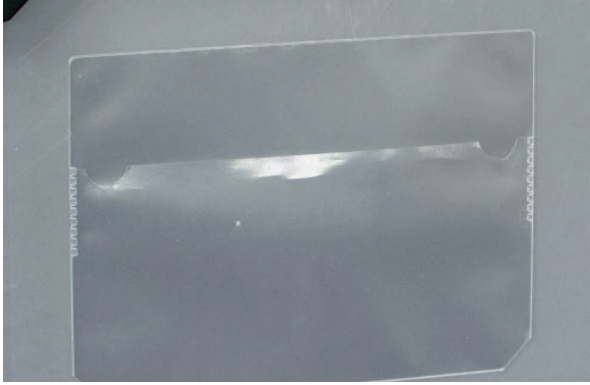


## LONG SIDE OPEN

---

C-sleeve interleaved

# MAXIMUM FLEXIBILITY



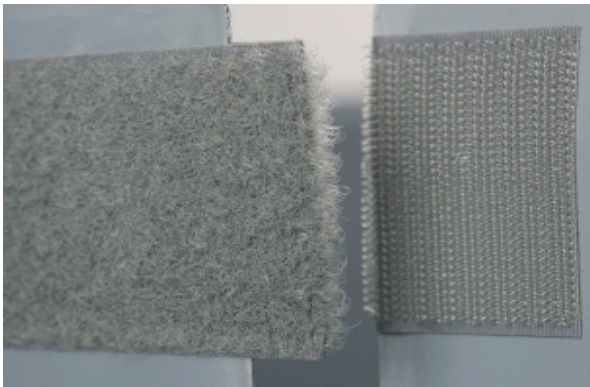
**DOCUMENT POCKET**

---



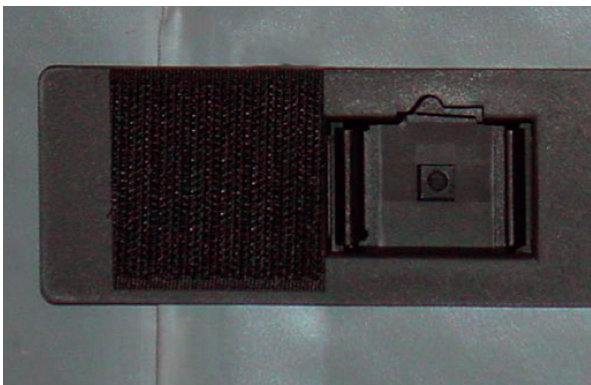
**EDGE CLOSURE**

---



**HOOK AND LOOP TAPE**

---



**SLIDE LOCK**

---



# SLEEVE **ALTERNATIVES**



**LOAD DOOR**

---



**CLICK FIX**

---

## MANY OPTIONS - MANY **POSSIBILITIES!**

The load door is an important feature for loading and unloading large carriers with single piece pallet sleeves. A further option is the document pocket outside the box. Here you can place an identifying feature.

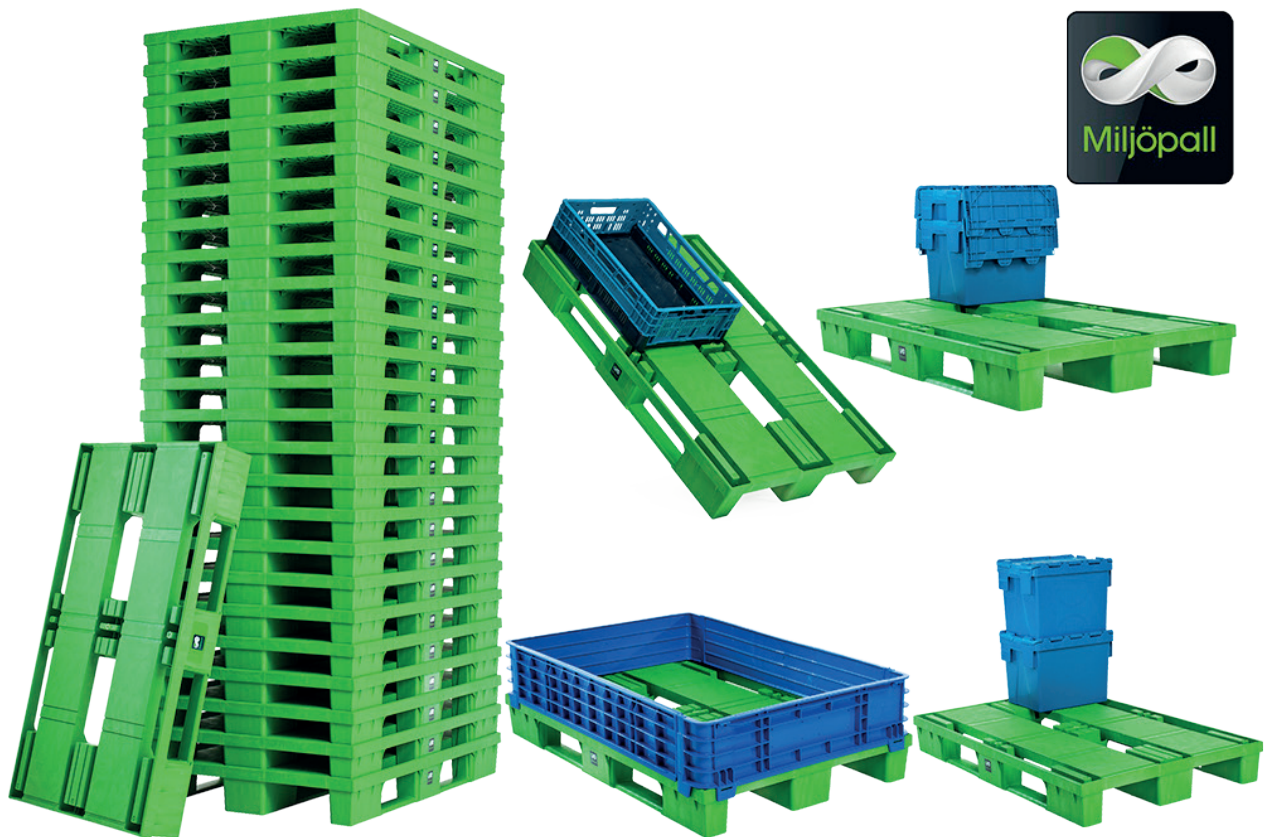
As an alternative a placard label holder can be attached to the sleeve. The label lasts as long as necessary on the pallet container and can be removed free of residues.

Electrostatically sensitive goods require secure transport and protected storage. To avoid damaging ESD (electrostatic discharge)-sensitive products, your packaging has to be made of electrically conductive plastics. We offer ESD protection as an additional equipment feature of our gaylord boxes.

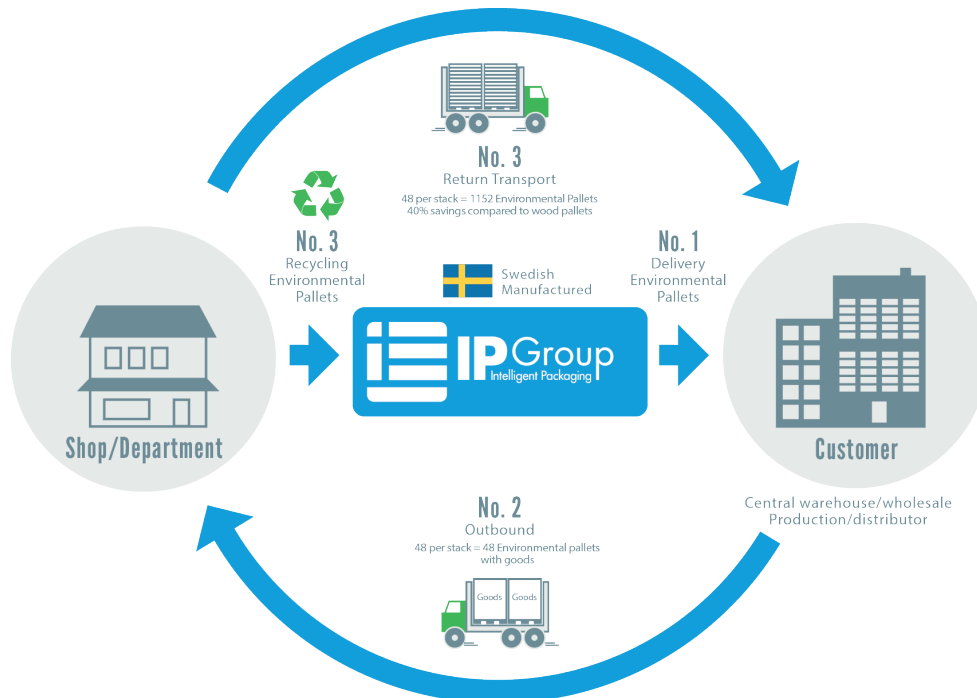
# THE ENVIRONMENTAL PALLET

## THE AWARD **WINNER!**

The Environmental Pallet did not come about by chance. It has taken a lot of hard work to design a pallet that actually makes a difference, not just for you who handle it, but also commercially and not least environmentally. A new EUR wooden pallet costs around SEK 120. One of our corresponding Environmental Pallets costs more. Does it really pay? The answer is YES! That is the idea behind our concept. A win-win all around. You, us and our environment. So, not only are the three pallet sizes based on EUR size 1200x800 mm compatible with each other like toy bricks, but there are also great savings to be made. On several levels. In short, we are talking about 40 % fewer return shipments, at least 40 % reduced storage space, 40 % reduced weight, 40 % reduction in carbon emissions and 100 % recycling and reuse.



# STREAMLINE YOUR FLOW



## Streamline your outflow and return flow.

The Environmental Pallet is engineered to play its part in an effective return flow. The low begins at IP Group. The straight recyclable pallet stacks leave the production point without wrapping or strapping. There is no risk of collapse. The pallet stacks take 40 per cent less space and facilitate double stacking. The pallets are distanced for easy unstacking and sit safe on the truck forks thanks to their friction material. In addition, the Environmental Pallet is 100 per cent recyclable and we give SEK 80 in deposit refund with little to no ground preparation.

## In production.

The Environmental Pallet functions perfectly in Production lines. Belt conveyors, chain conveyors and pallet racking systems pose no problems. A logo and RFID tags on the pallets reduces waste. Another positive aspect is that goods are not damaged by nails and splinters.

## To the wholesaler.

From production to the Wholesaler. Cartons and goods stand firm and safe on the pallets – the friction material is doing its job. The pallets manage 1000 kg in pallet racking systems. How the pallets reach the Store. The pallets are clean and neatly stacked, perfect for goods exposure in the store. The surface of the Environmental Pallet is hygienic and easy to hose down, and the low weight makes it easier to handle. Splinters, nails and wooden scraps all over the floor are things of the past.

## The Company.

Finally, as mentioned above, the company is a winner in effective return flows. 40 per cent fewer return transports and 40 per cent reduced weight equals 40 per cent reduced carbon emissions. **A pallet that makes a difference!!**

IPG **RETURN PACKAGING** CONCEPT  
AN **ECONOMY** INSPIRED BY THE  
CYCLUS OF **NATURE**



[WWW.IP-GROUP.COM](http://WWW.IP-GROUP.COM)

