

# FLEXIBLE FLOOR AND FLOORING PALLET

A UNIQUE STORING  
CONCEPT FOR  
FLEXIBLE FLOOR.







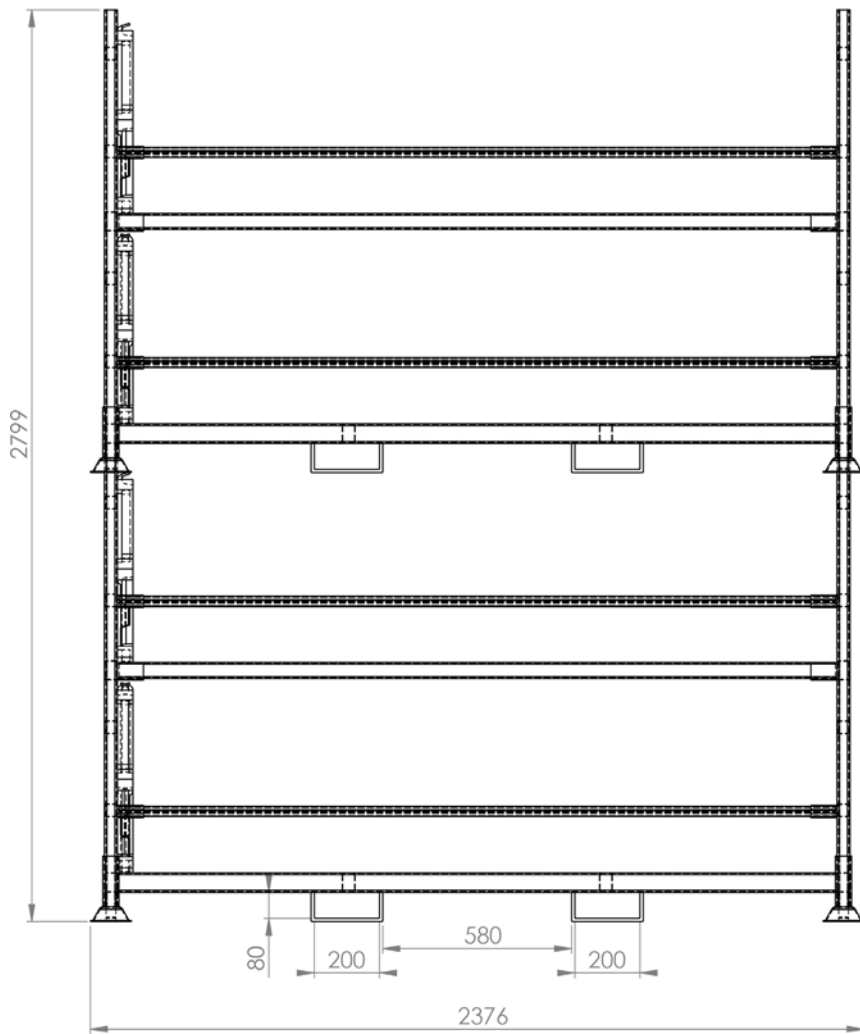
Rack Flooring pallet show 2 level on wheel base. You can add one rack more on top for 4 levels (4 levels not with wheel base)



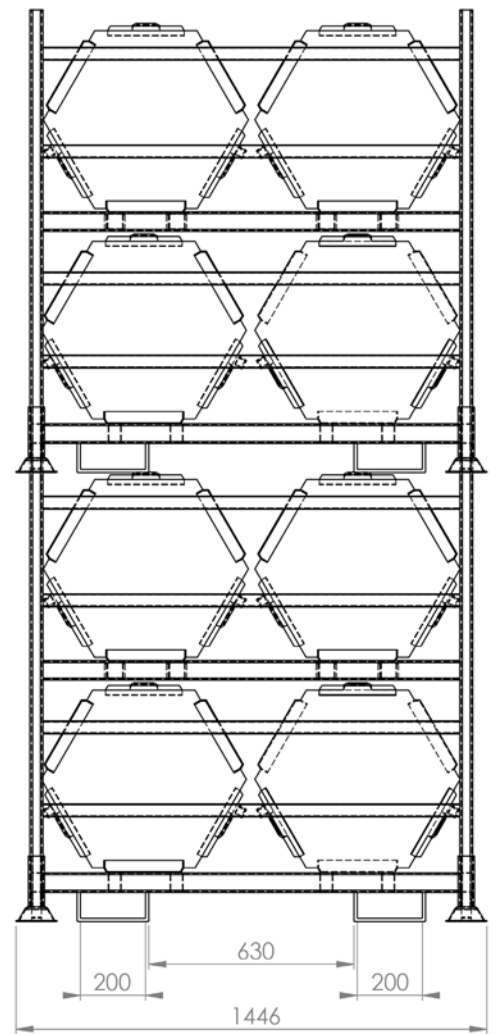
Rack Flooring pallet assembled on wheel base



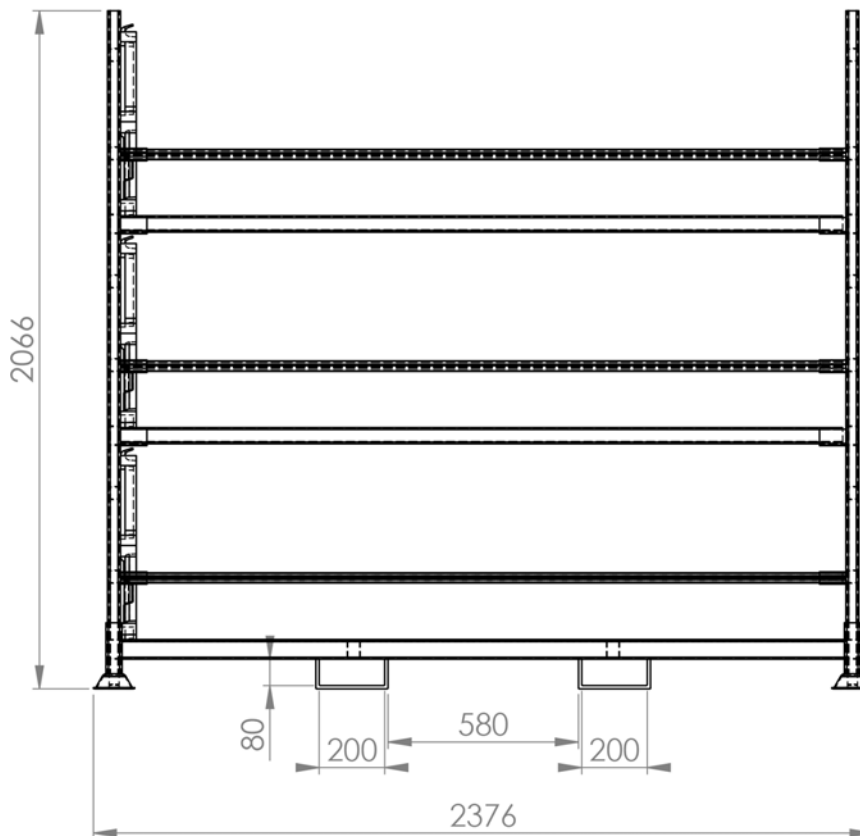




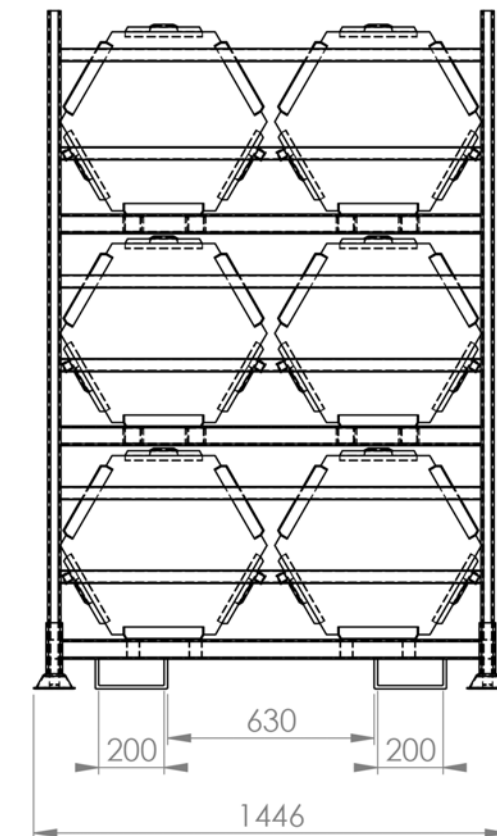
- Number in one row: 45 pcs
- Number in one level: 90 pcs



- Number in 4 levels: 360 pcs
- Number of sqm 3 levels: 97,2 sqm



- Number in one row: 45 pcs
- Number in one level: 90 pcs



- Number in 3 levels: 270 pcs
- Number of sqm 3 levels: 72,9 sqm

FLEXIBLE SOLID flooring system is a strong, flexible and easy mounted ground protecting interlocking floor with high sustainability.

FLEXIBLE SOLID comes in two different models: Basic and Superior. The hexagonal design provides exceptionally strong locking in six directions.

FLEXIBLE SOLID is made from strong plastic (HDPE), developed for the UN for emergency and conflict areas. Its flexibility and strength makes these ground protecting floor tiles perfect for store units, pavilions and even to build temporary roads where heavy vehicle can operate. Even when it comes to events, camping and as a protecting surface, FLEXIBLE SOLID flooring system is optimal to use.

## ADVANTAGES:

- Heavy duty floor.
- Can be applied on all types of outdoor surfaces, even sand, soil, grass and ice.
- Adapts to the subground and no preliminary work is needed.
- Can resist very heavy loads and carries trucks, machines and cars.
- Easy to install and move.
- Time of installation/person: approx. 100 m<sup>2</sup>/h

## USAGE AREAS:

- Warehouses and tents.
- Outdoor events and concert venues.
- Temporary parking lots, e.g. in connection with events.
- Temporary roads that also allows heavy vehicles (e.g. building/construction works).
- As subfloor for sport arenas.
- Protection of existing surfaces.
- Events on ice.









STRONG, FLEXIBLE  
AND EASY MOUNTED!





TIME OF INSTALLATION/PERSON  
APPROX. 100 m<sup>2</sup>/h







GROUND PROTECTING  
INTERLOCKING FLOOR WITH  
HIGH SUSTAINABILITY.



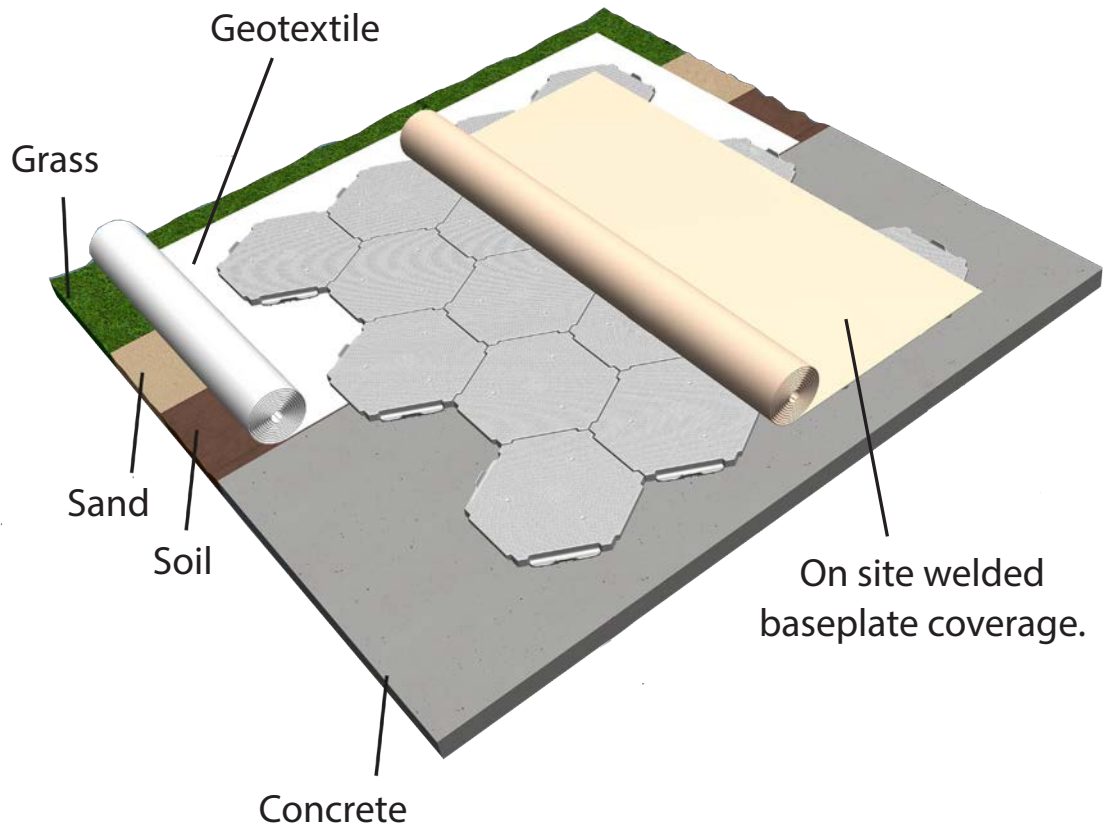
EASY TO INSTALL.





# FLEXIBLE SOLID FLOORING SYSTEM ASSEMBLED ON DIFFERENT SURFACES

A geotextile underneath protects the tiles from dirt on soft grounds like grass, sand or soil.  
A coverage can be placed on top of the floor for hygienic purposes, etc.





# TECHNICAL INFORMATION



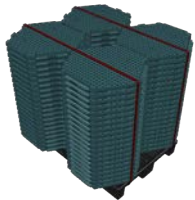
## FLEXIBLE FLOOR Heavy Duty

- Material: HDPE
- Point Load: 20000 Kg / m<sup>2</sup>
- Length: 630 mm
- Width: 575 mm
- Height: 50 mm
- Weight/tile: 3,1kg
- Weight/m<sup>2</sup>: ca 11,5 kg
- Colour: Black / grey. Request for optional colours.



## FLEXIBLE FLOOR SL / Light Duty

- Material: HDPE
- Point Load: 5000 Kg / m<sup>2</sup>
- Length: 630 mm
- Width: 575 mm
- Height: 50 mm
- Weigh/tile: 2.8 kg
- Weight/m<sup>2</sup>: ca 10,3 kg
- Colour: Black



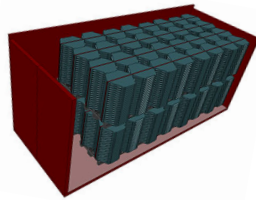
## LOADING ON A PALLET

### Flexible Floor Super Light Duty

- 84 pcs base tiles (22.68 m<sup>2</sup>)
- 1200 x 1200 x 1200 mm (LxWxH)
- Weight pallet: 243 kg
- Double stack two pallets to a total height of 2400 mm

### Flexible Floor Light Duty

- 84 pcs base tiles (22.68 m<sup>2</sup>)
- 1200 x 1200 x 1200 mm (LxWxH)
- Weight pallet: 260 kg
- Double stack two pallets to a total height of 2400 mm



## LOADING 20FT CONTAINER

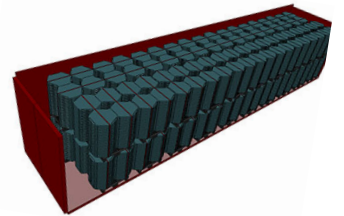
### Flexible Floor SL / Light Duty

- 1344 pcs base tiles (362,88 m<sup>2</sup>)
- Weight container: 1344 pcs x 2,8 kg = 3763,20 kg + pallets

### Flexible Floor Heavy Duty

- 1344 pcs base tiles (362,88 m<sup>2</sup>)
- Weight container: 1344 pcs x 3,1 kg = 4166,40 kg + pallets

- 1 Pallet: 115 cm high (20 tiles high) = 80 pcs/pallet = 21,6 m<sup>2</sup>.
- Totally 16 pallets stacked á 21,6 m<sup>2</sup> = 1280 pcs = 345,6 m<sup>2</sup>.



## LOADING 40HC CONTAINER

### Flexible Floor SL / Light Duty

- 3024 pcs base tiles (816,48 m<sup>2</sup>)
- Weight container: 3024 pcs x 2,8 kg = 8467,2 kg
- Totally 36 pallets stacked.

### Flexible Floor Heavy Duty

- 3024 pcs base tiles (816,48 m<sup>2</sup>)
- Weight container: 3024 pcs x 3,1 kg = 9375 kg

## LOADING SEMITRUCK







[www.ip-group.se](http://www.ip-group.se)

IPG Intelligent Packaging Group AB

Västrevångleden 2

302 41 Halmstad, SWEDEN

Tel: +46 35 102480

info@ip-group.com

