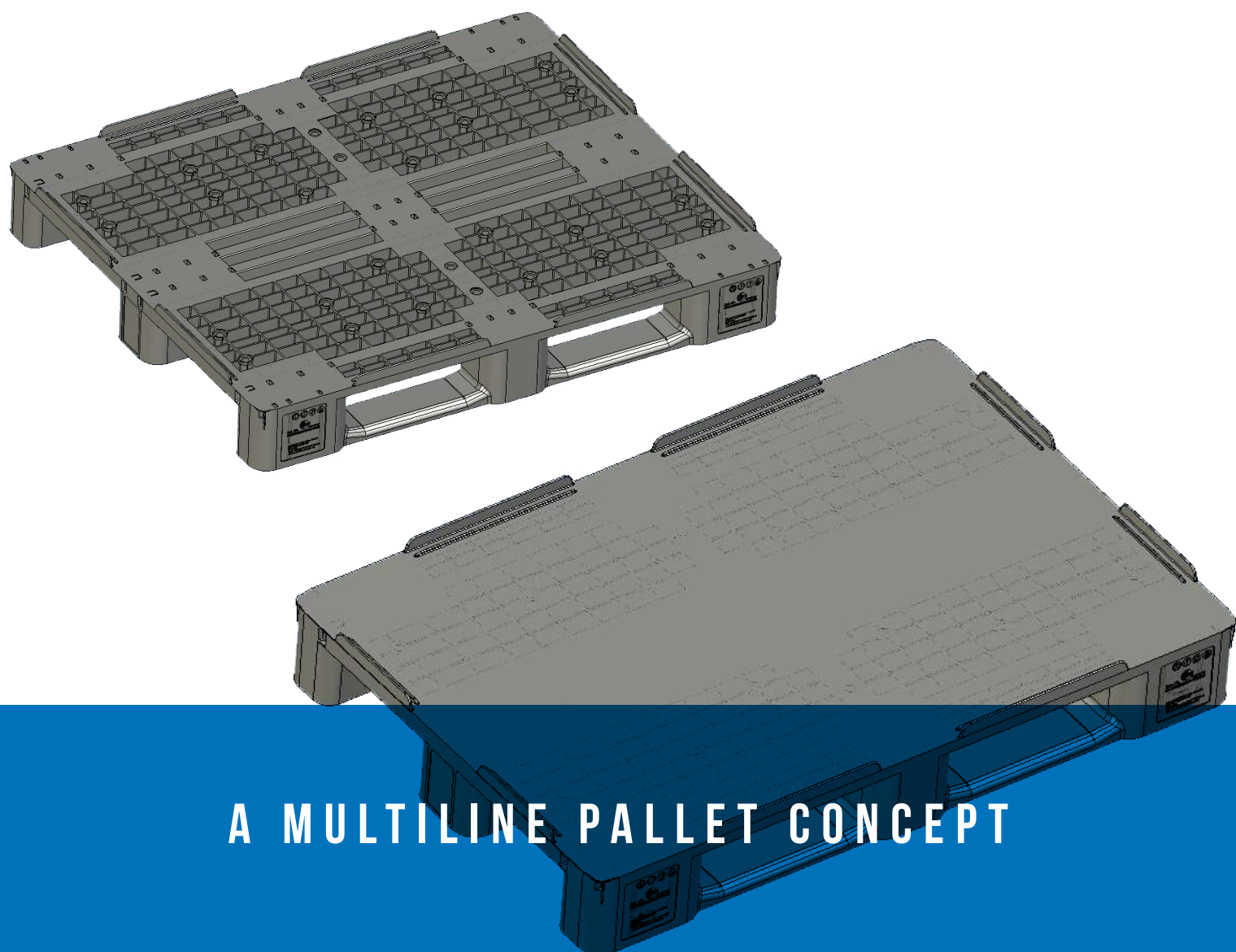


IPG MULTILINE PALLET CONCEPT

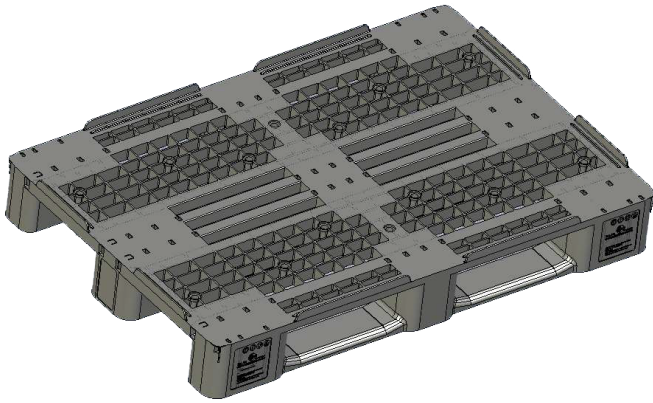
1200X800 / 1200X1000



A MULTILINE PALLET CONCEPT

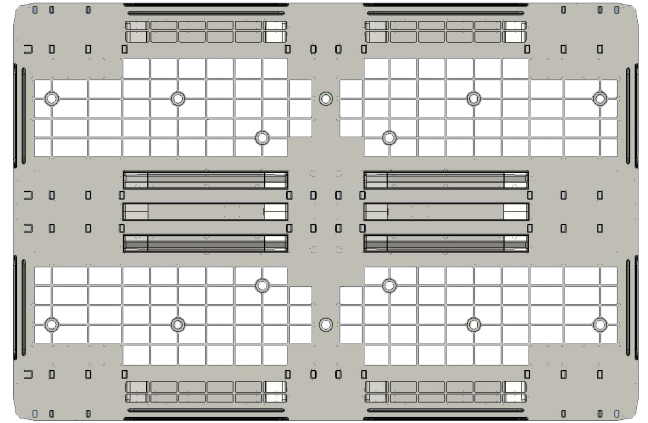
1200X800 OPEN DECK

CAN COMBINED WITH **SLEEVE AND LID**



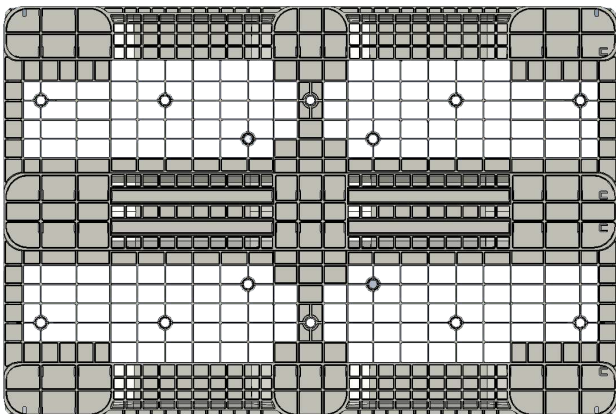
1200x800 Open Deck

Planned component weight: 11.0 - 11.5 kg



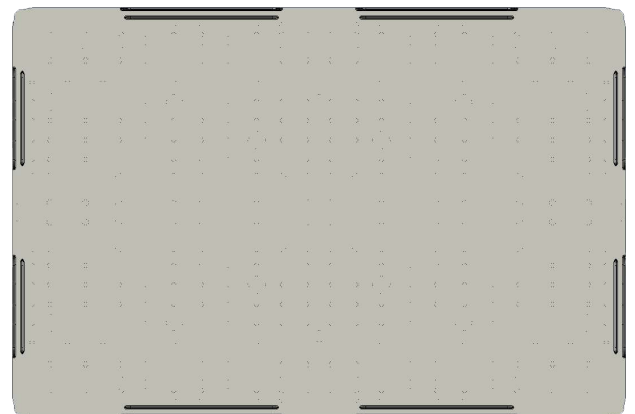
1200x800 Open Deck top

Can be added with steel reinforcement



1200x800 Open Deck Under

Rubber insert an option for Anti Slip

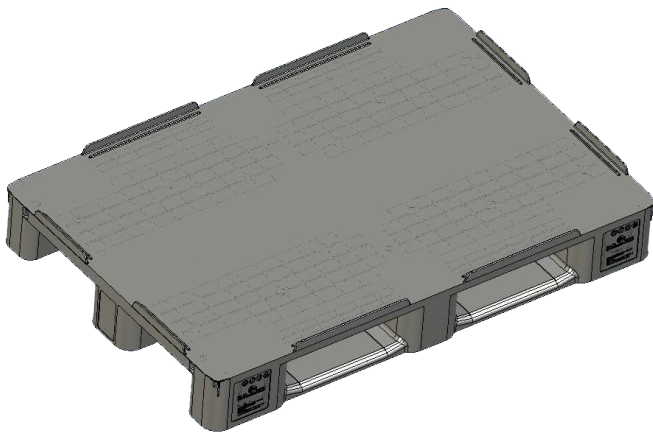


1200x800 for sleeves

Add Sleeves and lid

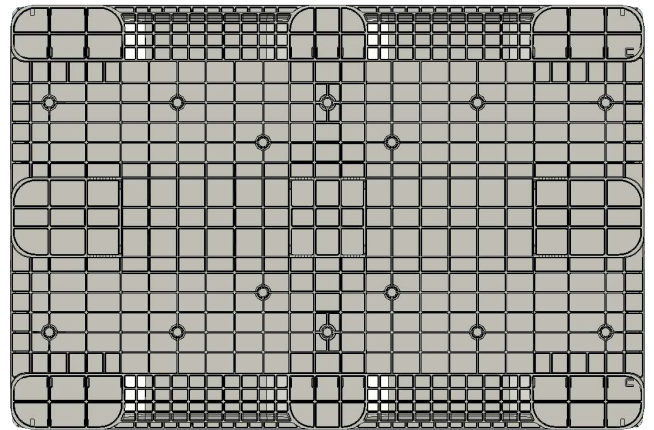
1200X800 **CLOSED DECK**

CAN COMBINED WITH **SLEEVE AND LID**



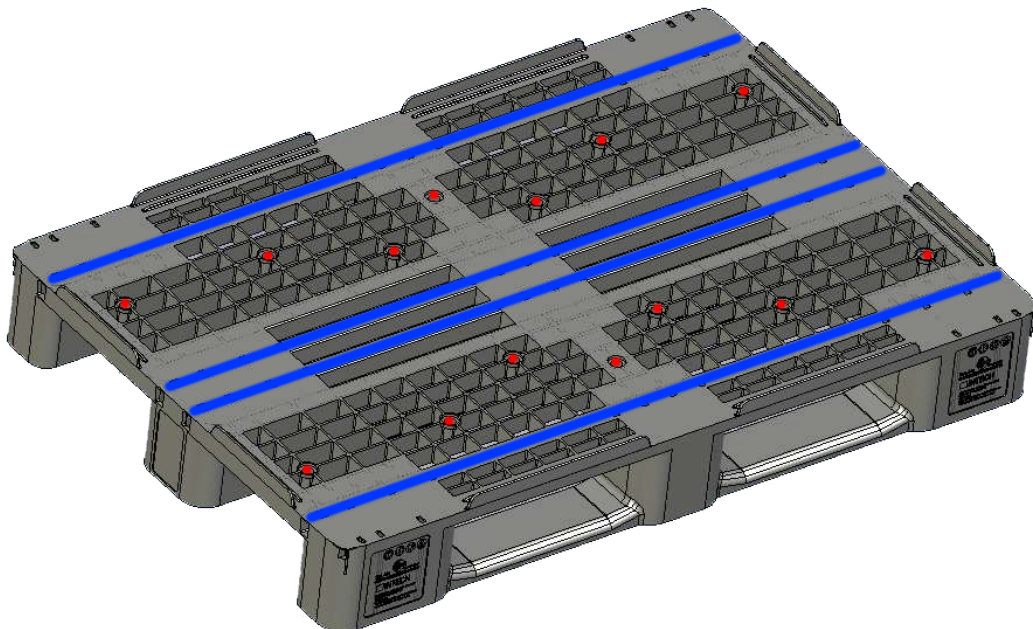
1200x800 Closed Deck

Planned component weight: 13,5 - 14 kg



1200x800 Closed Deck Under

Can be added with steel reinforcement

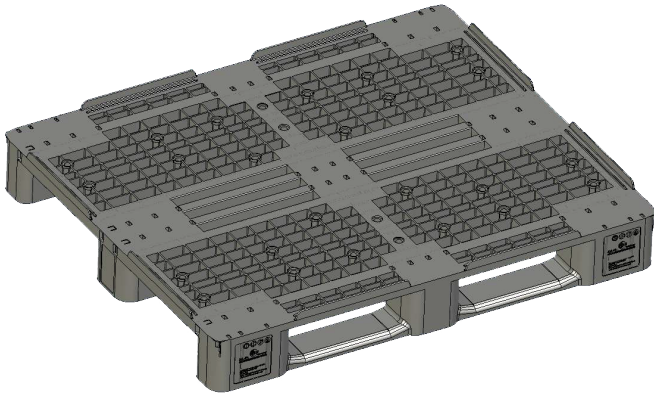


1200x800 Open Deck

You can add 2 or 4 steel reinforcement and up to 14 pcs rubber inserts for optimal friction

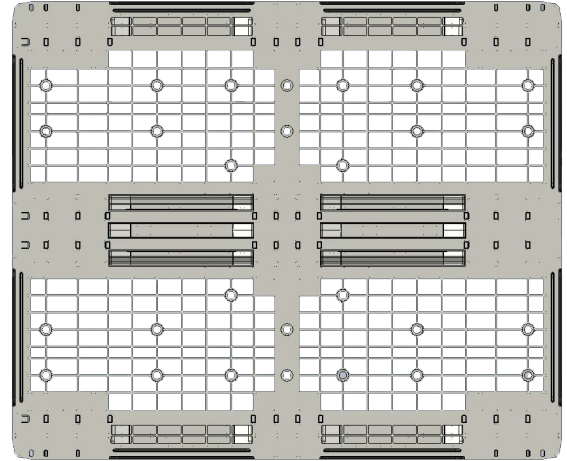
1200X1000 OPEN DECK

CAN COMBINED WITH **SLEEVE AND LID**



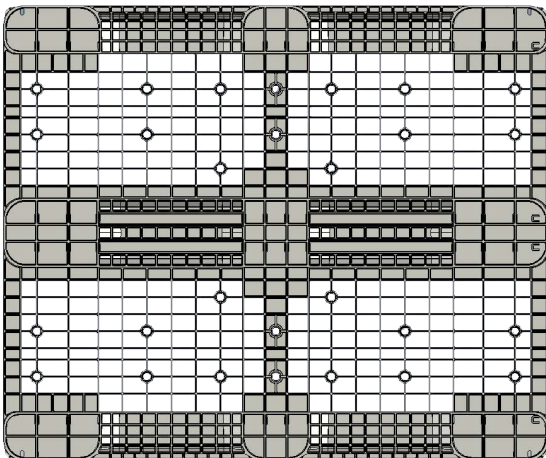
1200x1000 Open Deck

Planned component weight: 12,5-13 kg



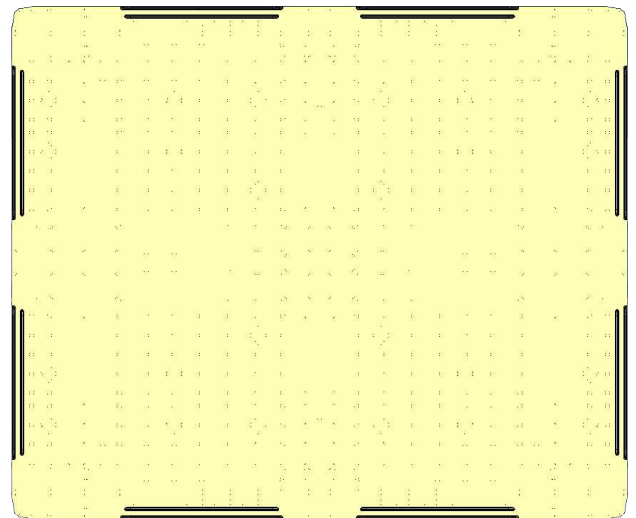
1200x1000 Open Deck top

Can be added with steel reinforcement



1200x1000 Open Deck Under

Rubber insert an option for Anti Slip

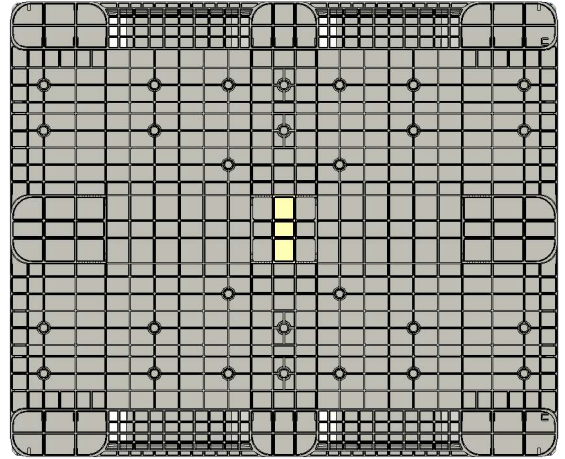
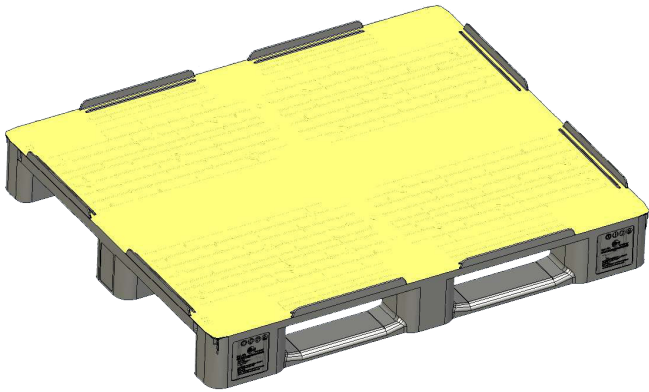


1200x1000 for sleeves

Add Sleeves and lid

1200X1000 **CLOSED DECK**

CAN COMBINED WITH **SLEEVE AND LID**

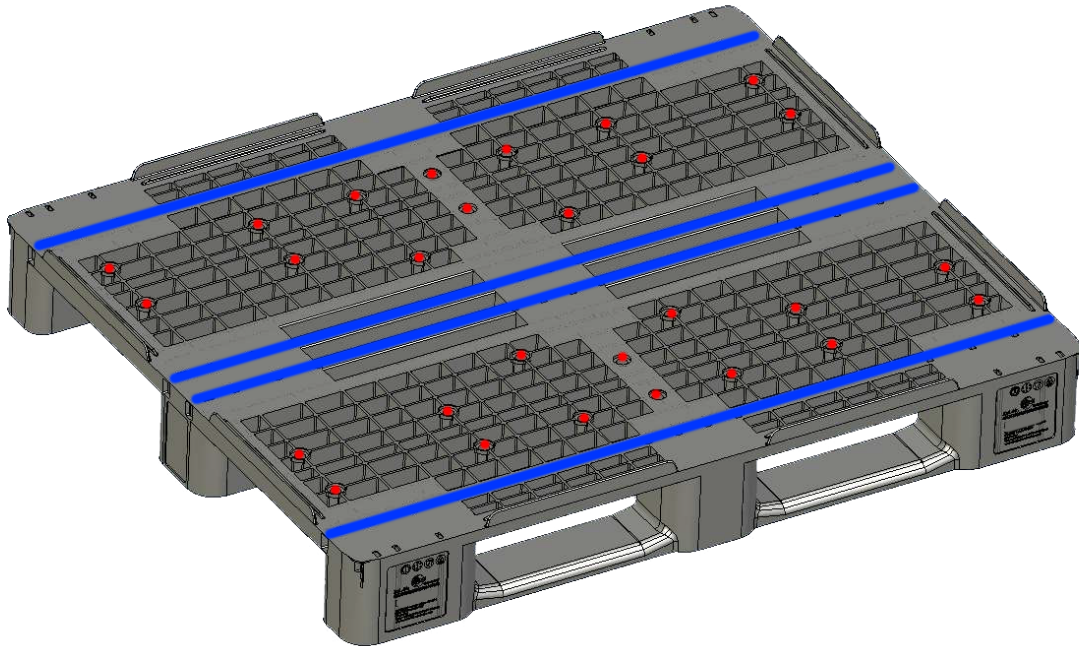


1200x1000 Closed Deck

Planned component weight: 15,5-16 kg

1200x1000 Closed Deck Under

Can be added with steel reinforcement



1200x1000 Open Deck

You can add 2 or 4 steel reinforcement and up to 28 pcs rubber inserts for optimal friction

IPG **MULTILINE PALLET** CONCEPT
AN **ECONOMY** INSPIRED BY THE
CYCLUS OF **NATURE**



WWW.IP-GROUP.COM

